



A 7-SEAT SUV THAT STANDS OUT FROM ITS COMPETITION



MEETS YOUR IMAGINATION FOR 7-SEAT SUV

The seven-seat SUV models of their own brands flocked into the market, but as the market gradually matured, the purely large space and economic prices could not meet the needs of consumers, and more and more consumption. People start to think: Is there a choice that can balance reality with ideals? With the entry of the Bisu T5, it has become a hot 7-seat SUV. For consumers, more than just an option, it is more likely to be an ideal answer.





Tik Tak koffie € 2,00
Cappuccino € 2,50
Espresso € 2,00
Thee (bio) € 2,00
& Taart!

比速T5



BSU

比速T5

1.5T+6MT/8AT GOLD COMBINATION

The specific speed T5 is powered by a 1.5T turbocharged engine with a maximum power of 110kW (150Ps) / 5500rpm and a maximum torque of 215Nm / 2000-4000rpm. It is matched with the 6MT gearbox and the rare 8AT gearbox of the same class. The 8AT gearbox has good reliability and shifting logic. It has won the National Science and Technology Progress Award for its excellent quality, fuel economy, comfort and excellent performance in terms of efficiency.



POWERFUL ENGINE

Under the hood of the seven-seat model, is a 1.5 liter petrol turbo with a capacity of 150 hp is installed. The engine is paired with a six-speed "mechanics" for a smooth driving experience.



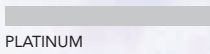
VERMILLION RED



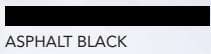
PEARL WHITE



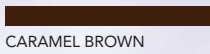
FLAME ORANGE



PLATINUM



ASPHALT BLACK



CARAMEL BROWN

Bring your style to every road trip...

LET THE FUN OF DRIVING BEGIN!





BISU AUTO

比速汽车

比速T5

EXTERIOR

ELEGANT & STYLISH SUV

Whether you're looking for a getaway trip or just go and drive around the town, you'll find the T5 sleeker design will never go unnoticed. Stylish wheels and headlights make the T5 stands out from its competition. The front-facing features includes a black screen with horizontal stripes. The ends of which are mounted on the headlights to express confidence on any road. Taillights and larger alloy wheels add a touch of sophistication. Let us live our life to the fullest with every trip, no matter where we're headed.



STYLISH FRONT

The front-facing features include a black screen with horizontal stripes, the ends of which are mounted on the headlights. The headlamps are composed of two circular lights, which narrows down the nose of the car. The front swirling shaft with fog lights adds to the heavy, dense, yet opulent look as well as the air intake grille is matched with the sleek LED daytime running lights.



ELEGANT BACK

The elegant cold taillights are dynamic and stylish. The body lines are smooth, the tail shape highlights the layering and full of sensory enjoyment while the slender taillights are blackened and simple. The venting shape of the unilateral double-out and the shark fin antenna further enhance the sense of movement and make the eyes of the consumer amazed and satisfied.



POLISHED SIDE

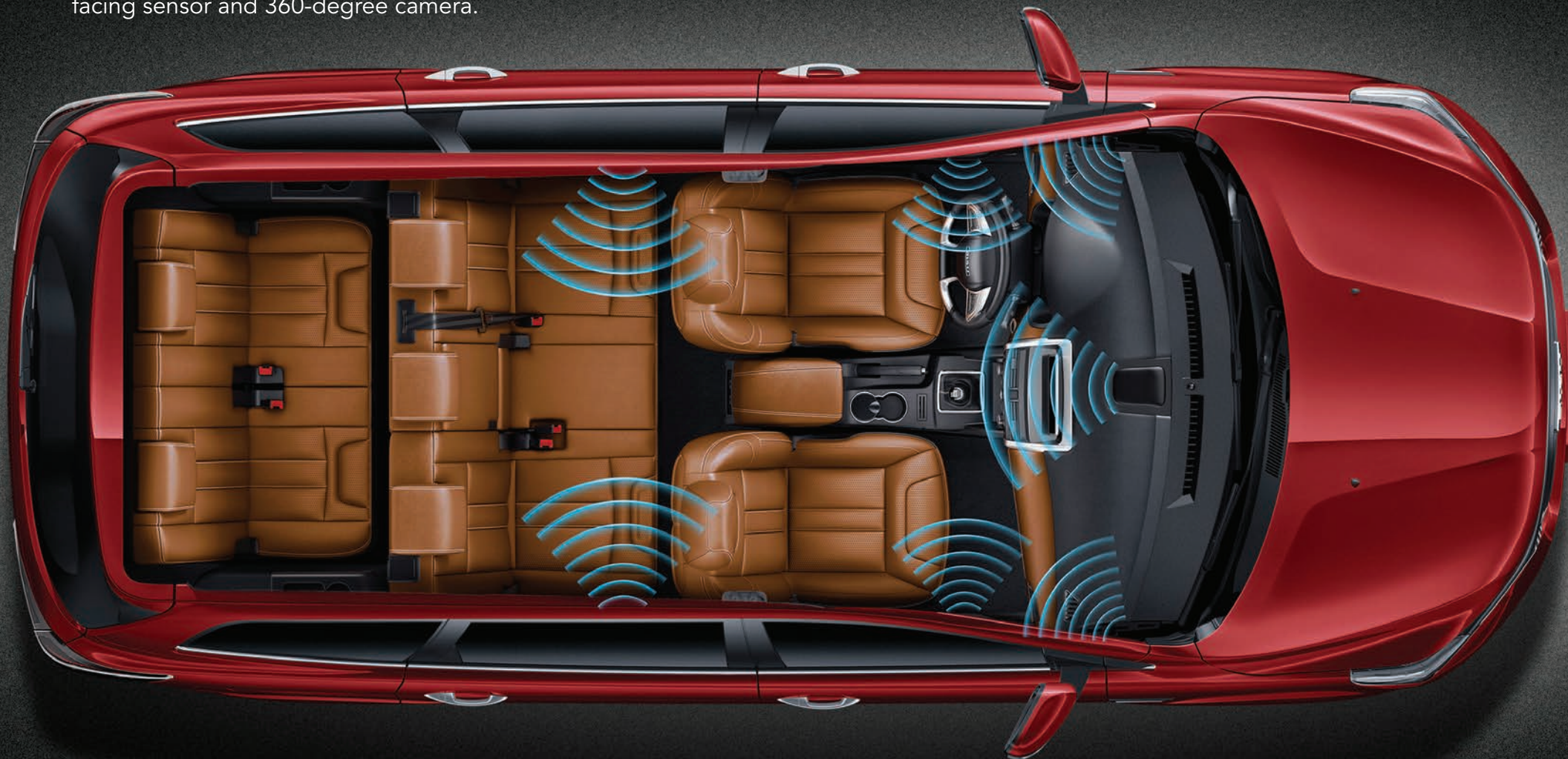
T5 fully takes this into consideration. The original design language of the T5 makes it more conspicuous. Under the premise of ensuring space, the design is extremely elegant and equipped with electrically folding exterior mirrors with camera, heated exterior mirrors, sensor LED wing lamp, chrome - plated window water slitter, stylish body with chrome plated exterior door handles.



TECHNOLOGY

RICHNESS BEYOND IMAGINATION

The T5 is equipped with features such as keyless entry / start, tire pressure monitor, power folding mirror, sensing wipers, 8-inch central touch display, electric steering, heated mirrors, rain sensors, cruise control, electric functions tailgate, heated leather and cooling seats, electric power booster, left and right side vents, rear camera, front-facing sensor and 360-degree camera.





INSTRUMENT PANEL

The instrument panel adopts a three-ring barrel design, and the right dial is a color LCD screen that integrates tire pressure monitoring, fuel consumption, mileage, and track deviation warning. The 8-inch central touch display integrates USB, Bluetooth, mobile phone connectivity, driving recorder, navigation, 360° panoramic image and more, combined with traditional physical buttons and knobs, making it easier to get started.



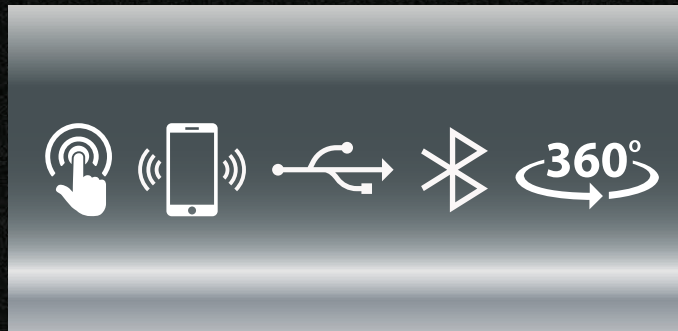
TIRE PRESSURE MONITORING SYSTEM (TPMS)



POWER FOLDING MIRROR



KEYLESS ENTRY START/STOP BUTTON



EASY CONNECTIVITY



STYLISH LEFT AND RIGHT SIDE VENTS

YOUR SAFETY IS OUR PRIORITY

When it comes to safety, T5 is equipped with ninth generation Bosch ESP body stabilization system, 360° panoramic image intelligent parking, lane departure warning, blind zone monitoring, ARP electronic anti-rolling system, wraparound 8 airbags and other 25 active and passive safety configurations. The item is the only one of the same class.

In order to ensure the stability of performance, the parts used in T5 are provided by internationally renowned suppliers, including Bosch in Germany, Nethers in the United States, Lear in the United States, and Continental in Germany. Its production line automation rate of 95% guarantee high-quality products to the maximum extent. T5 offers longer warranty to greatly enhance their consumer's confidence with the product.



8 WRAPAROUND AIRBAGS

T5 wraparound airbag system helps protect you and your family with the driver and front passenger dual stage airbags, driver and front passenger seat-mounted side airbags, a driver knee airbag, a front passenger seat-cushion airbag senses impact severity and adjust airbag deployment accordingly.



FRONT AND REAR SUSPENSION

T5 independent double wishbone front and rear suspension gives you the best of both worlds: responsive handling on pavement and a smoother ride off-road. This sophisticated suspension utilizes low-pressure gas-filled shock absorbers and hollow stabilizer bars. Also enhancing the on-road performance giving you good feel worry free driving experience.



BOSCH ESP BODY STABILIZATION SYSTEM

The road can be unpredictable. That's why T5 is installed with Electronic Stability Program (ESP) which supports the driver in nearly all critical driving situations. It comprises the functions of the antilock braking system (ABS) and the traction control system, but can do considerably more. It detects vehicle skidding movements, and actively counteracts them. This considerably improves driving safety and comfort.



INTERIOR

LUXURIOUS FIRST CLASS INTERIORS

High class and spacious interiors create luxurious feel driving experience and comfort. The ratio of the T5 interior is black and brown, which is low-key and luxurious. Abandoning the hard plastic material of most of the same-class models and replaced by a large-area leather package.





7-SEAT SUV

The T5 space performance is very good; the length, width and height have reached 4715/1830/1780mm; the wheelbase is 2760mm, and the seven-seat layout of 2+3+2 is adopted to give ample room for everyone.



FIRST CLASS COMFORT

T5 role of enhancing the driving experience is making sure everyone is comfortable. With seating for up to seven people and providing more comfort along the way with reclining third row seats, we've made sure to turn up the premium experience for you and your passengers. Push a button and an available panoramic sunroof lets everyone enjoy the view.



LUXURIOUS DESIGN

As soon as you enter the T5 cabin, you will feel the luxury design of the cab. The center console adopts a soft plastic molding process, whether it is visual or tactile, it creates a luxurious experience. High-end leather-trimmed seating and distinct accents add sophistication to the interior.



SPACIOUS TRUNK

Two or three rows of seats can be laid down in a 4/6 ratio to create a flat space that is flexible and versatile. In addition, the sliding function of the second row of seats can adjust the leg space of two or three rows to ensure ride comfort.

MODEL PARAMETERS

MODEL	1.5T-6 MT				1.5T-8AT		
	ELITE	COMFORT	LUXURY	DLX	LUXURY	DLX	FLAGSHIP
BASIC SPECIFICATION							
LxWxH (mm) (Excluding luggage rack)	4715 × 1830 × 1780						
Wheelbase (mm)	2760						
Front/rear wheelbase	1547/1550						
Min. Ground Clearance (mm)	203						
Seats	7						
Curb Weight (kg)	1570				1660		
ENGINE							
Engine No.	F15D+B (1.5T)						
Engine Type	Four cylinder inline engine, double over head camshaft (DOHC), DVVT, Multi-point electric gasoline						
Displacement (CC)	1.5T (1498cc)						
Inlet	Turbo charging						
Max. Power (kw/rpm)	110kw / 5500rpm						
Max. Torque (N.m/rpm)	215N.m / 2000-4000rpm						
Max Speed (Km/h)	170						
Emission	Euro V						
Transmission	6MT				8AT		
Tank Capacity (L)	56						
CHASIS							
Drive Mode	Front-wheel drive						
Suspension System (F/R)	Mcperson / Multi Link Independent Suspension						
Brake System (F/R)	Front Disc / Rear Solid Disc						
Parking Braking System	Mechanical Brake				EPB		
Steering System	EPS						
Tire	215 / 60 R17						
Full Size Spare Tire	•	•	•	•	•	•	•
EXTERIOR							
Automatic Induction Headlamp	•	•	•	•	•	•	•
Combined Lens Headlamp	•	•	•	•	•	•	•
Adjustable Headlamp Height	•	•	•	•	•	•	•
Front Fog Lamp	•	•	•	•	•	•	•
L-Type Bright Led For Daytime Driving	•	•	•	•	•	•	•
Electrically Adjusted External Rearview Mirror Integrated Led Side Turn Light	•	•	•	•	•	•	•

Courtesy Lamp	•	•	•	•	•	•	•
Electrically Folding Exterior Mirrors	-	-	•	•	-	•	•
Heated Exterior Mirrors	-	-	•	•	-	•	•
Wing Air Intake Grille	•	•	•	•	•	•	•
Moving Tail With Led Brake Light	•	•	•	•	•	•	•
Roof Rack	•	•	•	•	•	•	•
Shark Fin Antenna	•	•	•	•	•	•	•
Sensor LED Wing Lamp	•	•	•	•	•	•	•
Chrome - Plated Window Water Slitter	•	•	•	•	•	•	•
Stylish Body	•	•	•	•	•	•	•
Boneless Wiper	•	•	•	•	•	•	•
Smart Rain-Sensing Wiper	-	-	•	•	•	•	•
Rear Wiper/Rear Window Defogging	•	•	•	•	•	•	•
Panoramic Sunroof	-	•	•	•	•	•	•
Chrome Plated Exterior Door Handle	-	•	•	•	•	•	•
Power Rear Door	-	-	-	•	-	-	•
Aluminum Alloy Rim	•	•	•	•	-	-	-
Two-Color Aluminum Alloy Rim	-	-	-	-	•	•	•
Hood Ornament	•	•	•	•	•	•	•
Sport Double Exhaust Funnel	•	•	•	•	•	•	•
INTERIOR							
Luxurious Layered Interior	•	•	•	•	•	•	•
Sports Interior	•	•	•	•	-	-	-
Luxurious Interior	-	-	-	-	•	•	•
Smart Trip Computer	•	•	•	•	•	•	•
Central Console Software Material+Skin	•	•	•	•	•	•	•
Front Central Armrest With Storage Box	•	•	•	•	•	•	•
Smart Illuminating Instrument	•	•	•	•	•	•	•
SUPER COMFORTABLE							
Leather Multifunction Steering Wheel	PU	PU	Leather	Leather	PU	Leather	Leather
Adjustable Steering	•	•	•	•	•	•	•
Driver/Passenger's Visor	•	•	•	•	•	•	•

MODEL PARAMETERS

Seats Material	Textile	Leather	Leather	Leather	Leather	Leather	Leather
Driver's Seat 6-Ways Manually Adjusted	•	•	•	-	•	•	-
Driver's Seat 6-Ways Electronically Adjusted	-	-	-	-	-	-	•
Pilot's Seat 4-Ways Adjustable	-	-	-	-	-	-	•
Driver's Lumbar Support	-	-	•	•	-	•	•
Front Seats Heating	-	-	-	•	-	-	•
Middle 4/6 Seats Lowered	•	•	•	•	•	•	•
Middle Front & Rear Seat Slide	-	-	-	-	•	•	•
Third-Row Seats Foldable	•	•	•	•	•	•	•
Driver/Passenger's Seat Rear Storage	•	•	•	•	•	•	•
Five Remote Control Door Locks	•	•	•	•	•	•	•
4 Power Windows (Anti-Pinch For Driver)	•	•	•	•	-	-	-
4 Power Windows (Anti-Pinch For 4 Windows)	-	-	-	-	•	•	•
Full Green Glass	•	•	•	•	•	•	•
Rear Privacy Glass	-	-	-	•	-	-	•
Electric Air Conditioning	•	•	-	-	•	-	-
Comfortable Automatic Air Conditioning	-	-	•	•	-	•	•
Back Air Outlet	•	•	•	•	•	•	•
Peps/Start-Stop Button	-	•	•	•	•	•	•
Remote Key (2)	•	-	-	-	-	-	-
Smart Key (2)	-	•	•	•	•	•	•
Key Forgetting Smart Reminder	•	•	•	•	•	•	•
Cruise Control System	-	-	-	•	•	•	•
Follow Me Home Function	•	•	•	•	•	•	•
HD Car Driving Recorder	-	-	-	-	-	•	•
Front Lamp / Rear Reading Lamp	•	•	•	•	•	•	•
Front Convenient Eyeglass Box	•	•	•	•	•	•	•
Front Door Lamp	•	•	•	•	•	•	•
Trunk Lamp	•	•	•	•	•	•	•
Cigarette Lighter	•	•	•	•	•	•	•
Portable Ashtray	•	•	•	•	•	•	•

12V Power Port	•	•	•	•	•	•	•
Third-Row Usb Charging Port	•	•	•	•	•	•	•
MULTIDIMENSIONAL SECURITY							
High-Strength Load-Bearing Safety Body	•	•	•	•	•	•	•
Built Four Ultra-High Strength Bumper Beam	•	•	•	•	•	•	•
Crumple Zones And Collapsible Steering Columns	•	•	•	•	•	•	•
ABS/EBD	•	•	•	•	•	•	•
ARP	•	•	•	•	•	•	•
EBA	•	•	•	•	•	•	•
ESP	•	•	•	•	•	•	•
TCS	•	•	•	•	•	•	•
HHC	•	•	•	•	•	•	•
TPMS	-	-	•	•	-	•	•
Auto-Hold	-	-	-	•	•	•	-
Electronic Anti-Theft Engine	•	•	•	•	•	•	•
Auto Locking/Auto Parking Lock	•	•	•	•	•	•	•
Parking Sensor	-	-	•	-	•	•	•
Reverse Sensor	•	•	•	•	•	•	•
Reverse Driving Assistant (Reversing Camera+Boost Line)	•	•	•	•	•	•	•
Blind Spot Monitoring	-	-	-	•	-	•	•
360O Birds Eye View System	-	•	•	•	•	•	•
Lane Departure Warning (Ldw)	-	-	-	•	•	•	•
Central Power Lock	•	•	•	•	•	•	•
Electronic Steering Lock	-	•	•	•	•	•	•
Brake Pad Wear Alert	•	•	•	•	•	•	•
Door Unclosed Well Warning/Indicator	•	•	•	•	•	•	•
INTELLIGENT ENTERTAINMENT							
8 Inch Mp5 Screen Radio+Usb+ Bluetooth System	•	•	•	•	•	•	•
Gps	-	•	•	•	•	•	•
Carplay	•	•	•	•	•	•	•
Carplay Speakers (Pcs)	4	4	6	7	4	6	7
•: Equipped o: Option -: Not Equip							

Due to technical improvements the above mentioned parameters will vary from time to time. Please take the parameters & configuration prevailing at the ordering time provided by the seller as the final.



WORLDWIDE MOTORS COMPANY LTD.

HEADQUARTER

No. 79, Russian Blvd (St.110), Sangkat Teuk Thla,
Khan Sen Sok, Phnom Penh, Cambodia

BRANCH 1

No.12, St. 6B, Sleng Rolerng Village, Sangkat Teuk Thla,
Khan Sensok, Phnom Penh, Cambodia

CONTACT

+855 78 999 006
+855 93 555 598
+855 12 776 842

WEBSITE

✉ info@wmckh.com
🌐 bisu.wmckh.com
📘 facebook.com/wmcbisu

